



For sale France - Courchevel
COURCHEVEL 1850 - DUPLEX TOP FLOOR - SKI-IN SKI-OUT

2.527.000 €

4
Rooms

3
Bedrooms

2
Bathrooms

82 sqm
Total area

1
Parking

Duplex apartment located in an upscale area of Courchevel 1850. Departure and return directly on skis.

7 Avenue des Papalins
« Immeuble Michelangelo »
98000 Monaco

B1027
1 / 4

Tél : +377 92 16 16 32
monaco@barnes-international.com
www.valeri-agency.com



Property features

Product type :	Apartment	Num rooms :	4 rooms
City :	Courchevel	Country :	France
Living area :	82 m ²	Bedrooms :	3
Bathrooms :	2	Parking :	1
Cellar :	1	Floor :	6&7
Condition :	Luxurious services	View :	Unobstructed mountain view
Exposure :	South	Release date :	Now
Ref. :	B1027		

Descriptions

Located in the prestigious Jardin Alpin district in Courchevel 1850, this superb 87 sqm duplex apartment occupies the top floors of a residence nestled in the heart of the forest, in a peaceful and natural setting.

Offering direct access to the slopes, it allows ski-in/ski-out departure, ideal for skiing enthusiasts.

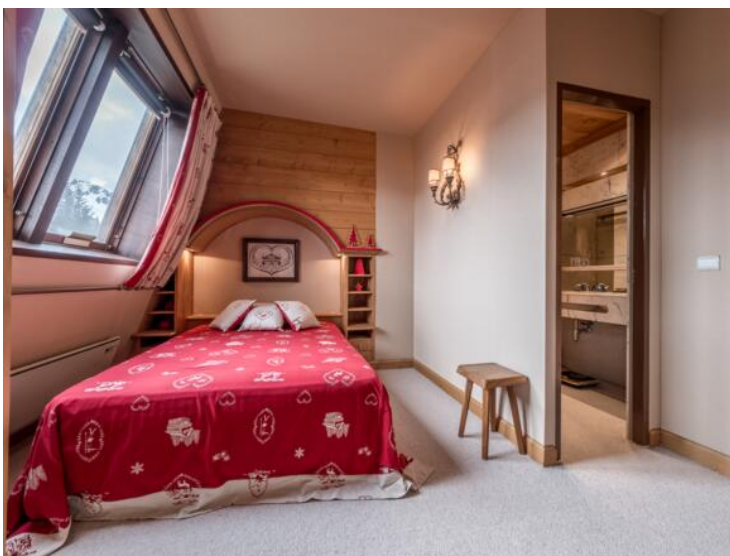
The spacious and bright living space consists of a living room with fireplace, a dining area and an open kitchen. The south-facing balcony offers panoramic views of the surrounding Alpine mountains.

Configuration:

- 3 double bedrooms
- 2 bathrooms
- Warm living room with fireplace
- South facing balcony with open views

Equipment:

- Ski locker
- Cellar
- Covered parking
- Elevator, intercom, digicode



B1027
3 / 4

