



Rental France - Courchevel
COURCHEVEL 1850 - CHALET WITH POOL

Rent on request / month
+ service charges

6
Rooms

4
Bedrooms

4
Bathrooms

Chalet Pistache is a sumptuous 300 sqm detached chalet located in Courchevel 1850, in the sought-after area of Cospillot, a stone's throw from the slopes. With an indoor swimming pool, jacuzzi, hammam and top-of-the-range services, it can accommodate up to 8 people for an unforgettable alpine stay.

7 Avenue des Papalins
« Immeuble Michelangelo »
98000 Monaco

LS106
1 / 8

Tél : +377 92 16 16 32
monaco@barnes-international.com
www.valeri-agency.com



Property features

Product type :	Cabin	Num rooms :	6
City :	Courchevel	Country :	France
Bedrooms :	4	Bathrooms :	4
Condition :	Luxurious services	View :	Vue montagne
Ref. :	LS106		

Descriptions

Chalet Pistache is ideally located in the sought-after Cospillot area of Courchevel 1850, just steps from the shops and ski slopes.

This prestigious standalone chalet offers 300 sqm across 3 levels with an elevator and is designed to accommodate 8 guests.

Perfectly combining alpine authenticity with modern comfort, it is the ideal retreat for a memorable stay in the 3 Vallées.

After a day on the slopes, relax in the wellness area featuring an indoor swimming pool, hammam, and outdoor jacuzzi.

A private garage and ski room with boot warmers are also at your disposal.

Highlights of the property:

- Elevator
- Traditional fireplace
- Indoor pool, hammam & outdoor jacuzzi
- Ski room with boot warmers

Chalet layout:

Level 0 – Bedrooms & Relaxation Area

- Bedroom 1: Queen-size bed, fireplace, ensuite bathroom with bathtub, single basin, and WC
- Bedroom 2: Twin beds, ensuite bathroom with bathtub and shower, single basin, and WC
- Bedroom 3: King-size bed, TV, large wardrobe, ensuite bathroom with bathtub, double basin, and WC
- Direct access to the outdoor jacuzzi

Level 1 – Master Suite

LS106
2 / 8



- Bedroom 4 – Master suite: King-size bed, walk-in wardrobe, safe
- Large balcony
- Office area
- Bathroom with shower, whirlpool bathtub, double basin, and separate WC

Level 2 – Living Area

- Bright and spacious living room with traditional fireplace
- Open-plan dining area
- Fully equipped American-style kitchen
- Large panoramic balconies

Included services:

- Welcome gifts
- Beds made on arrival, towels and linens provided
- End-of-stay cleaning
- Concierge service
- Daily housekeeping (3 hours per day)

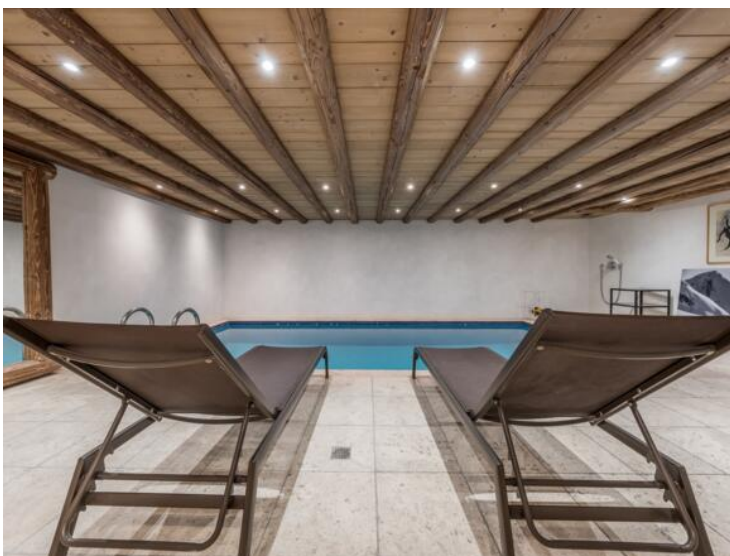


LS106
4 / 8





LS106
6 / 8



LS106
7 / 8

